

## **Mt. Agamenticus Parking & Lease Planning Subcommittee**

**Tuesday, April 3, 2018**

### **Mt. Agamenticus Base Parking Lot 3:00 PM**

**SUBCOMMITTEE MEMBERS:** Two Town of York Selectmen, Dawn Sevigny-Watson & Mike Estes, Two YWD Trustees, Andy Belliveau & Rick Boston, York Parks & Recreation Director Mike Sullivan, Mt. Agamenticus Conservation Coordinator Robin Kerr, YWD Superintendent Don Neumann and YWD Resource Protection Manager Gary Stevens.

#### **APRIL 3, 2018 3:00 PM SUBCOMMITTEE MEETING NOTES;**

**Member Attendees:** Mike Estes, Robin Kerr, Mike Sullivan, Andy Belliveau, Rick Boston, Don Neumann, Gary Stevens

**Guest Attendees:** Jon Edgerton of Wright-Pierce, Engineering Consultant, Kristen Lamb (CFW), Joe Ducharme of Clivus New England Inc. (self-contained recycling composting toilets).

**Member Invitees unavailable to attend:** Dawn Sevigny-Watson

The March 20<sup>th</sup> Meeting was rescheduled to April 3rd due to snow cover. Today's meeting was a fluid, on-site meeting to first observe the existing and proposed Base Parking Lot location and conditions then move to the Center for Wildlife site to do the same. The purpose was to allow everyone involved to "get a feel" for the two parking lot options and discuss the pros and cons of each site. Most of which were discussed at the previous meeting of this committee.

The committee was surprised that some of the proposed Base Parking area is flat but not surprised to have ledge. According to the current lease, this site is 2.5 acres but can be configured any way necessary if it lies on the righthand corner of Mountain Road and Mt A. Road.

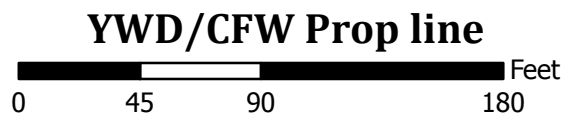
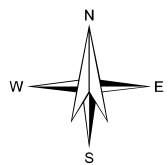
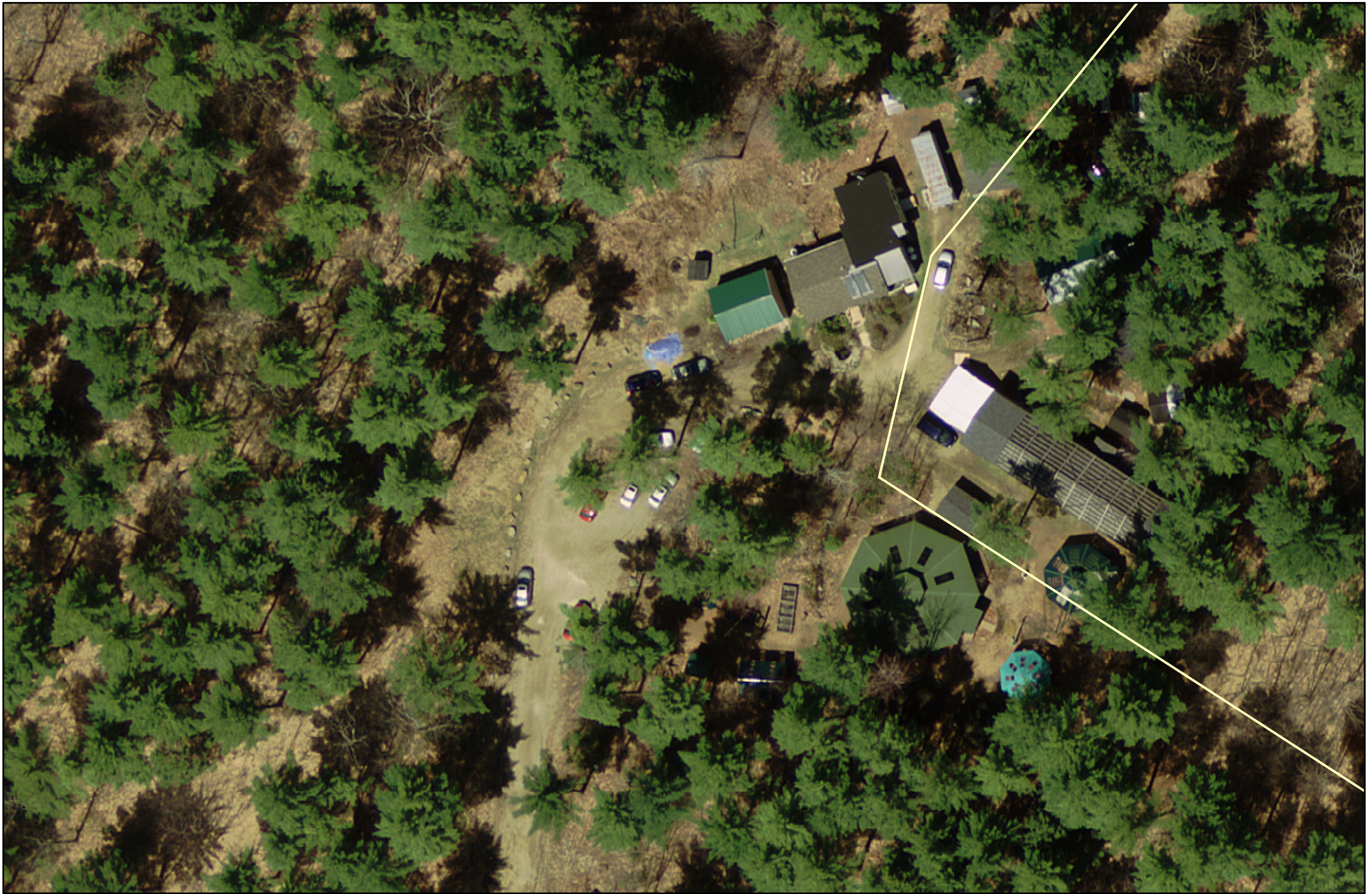
The CFW site is flatter with the high point being on the left side of the driveway at Mountain Road. There was some discussion about the CFW site dropping into a "ravine" on that side of the driveway and water passing through there to Chase's Pond. The Chase's Pond Watershed Fall line with the Great Works River watershed is not far beyond the existing CFW Office to the right side of the driveway. YWD would support the idea of the proposed parking lot drainage flow to the Great Works River watershed if possible.

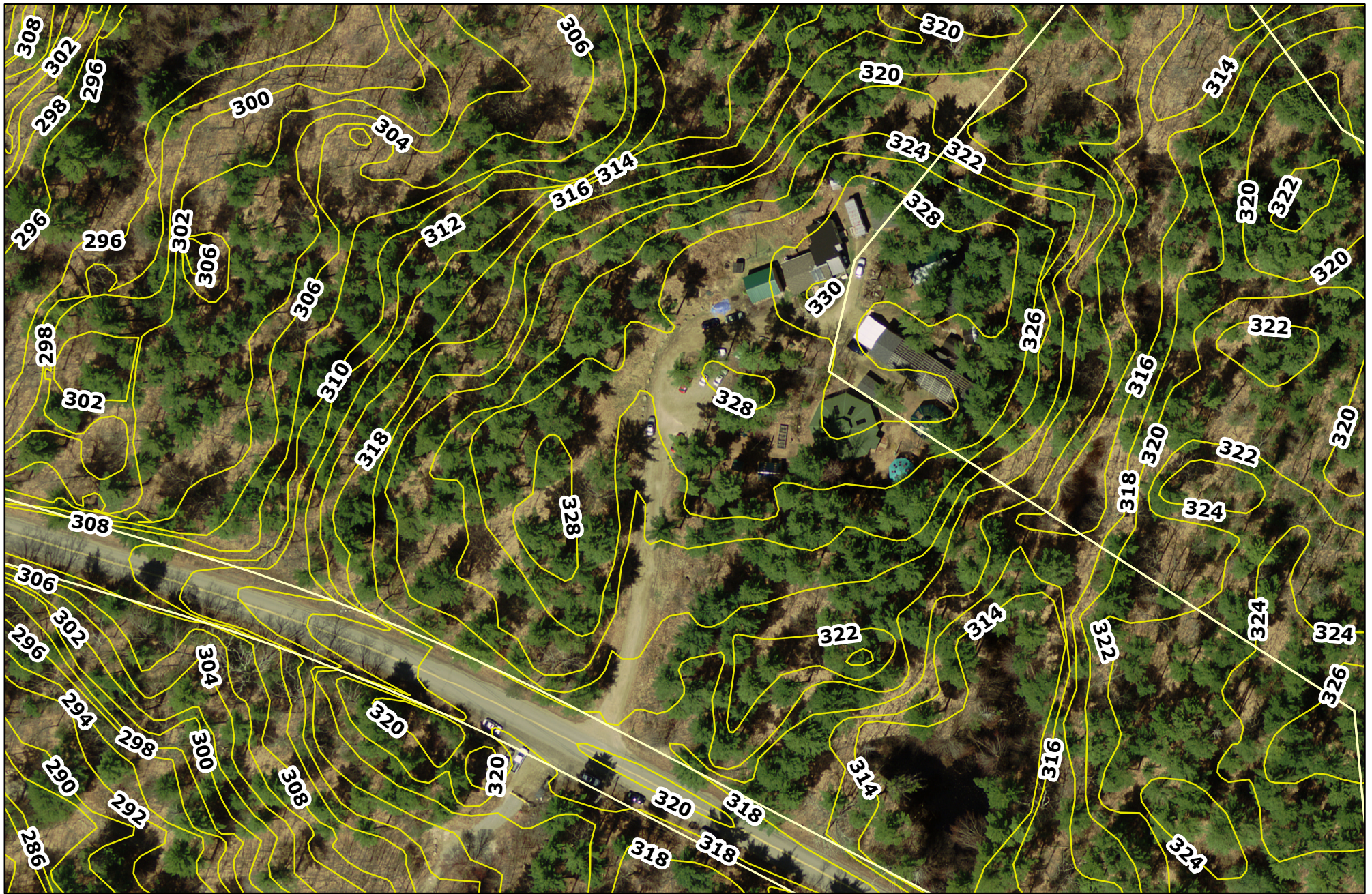
Kristen Lamb discussed her concern for the "wildlife clinic buildings" that will not be relocated and are near the CFW/proposed Mt. A. parking lot property line. The buildings house injured wildlife, the animals in these buildings cannot be disturbed. Kristen also added, the strong CFW/Mt. A. bond and partnership is very important and wishes it to continue. She hopes when the CFW is in their new facility that both the CFW and Mt. A. can become a destination for people and families to visit. Robin agreed.

There was much discussion of discouraging on street parking, public preference, parking lot surface material types, restrooms, building locations and size, connector trail location to the Ring trail, parking lot size, etc. All of which are too soon to be decided and are part of design and engineering, although Don reiterated, if more area is required to make the parking lot work he is open to that discussion at the appropriate time.

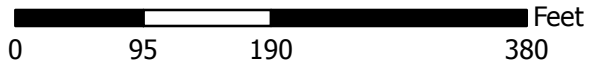
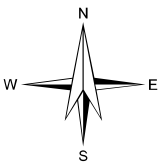
Jon Edgerton will review the information gathered to date and create a draft Scope of Work for design and engineering of the Mt A. Parking lot and Restrooms. When the Scope of Work has been approved by the sub-committee. W-P will begin the work.

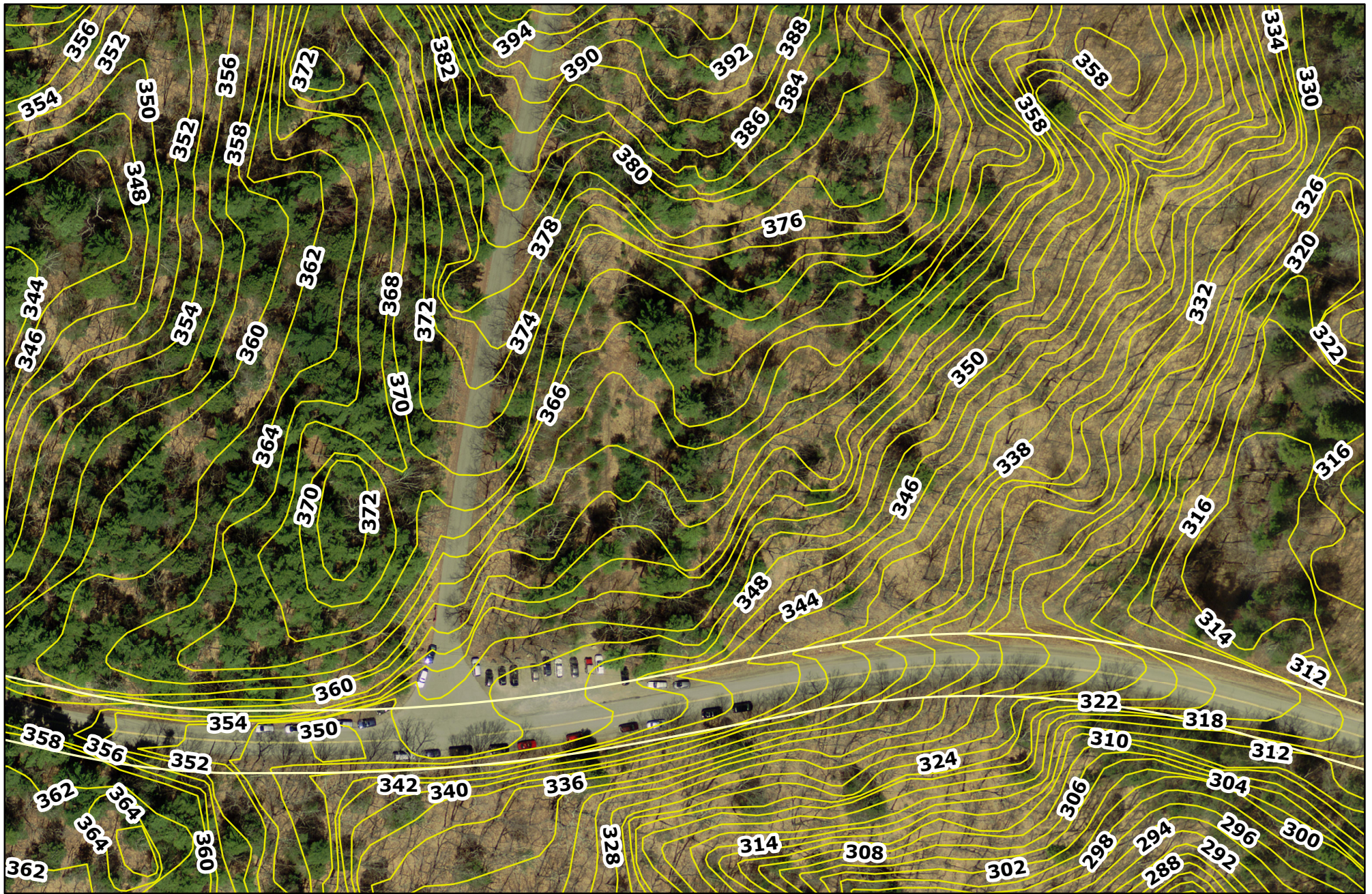
**NEXT MEETING DATE, TIME and LOCATION: TBD**





### YWD/CFW Elevations





### Base Parking elevations

