

# Mount Agamenticus Parking and Restroom Improvements

## Project Highlights

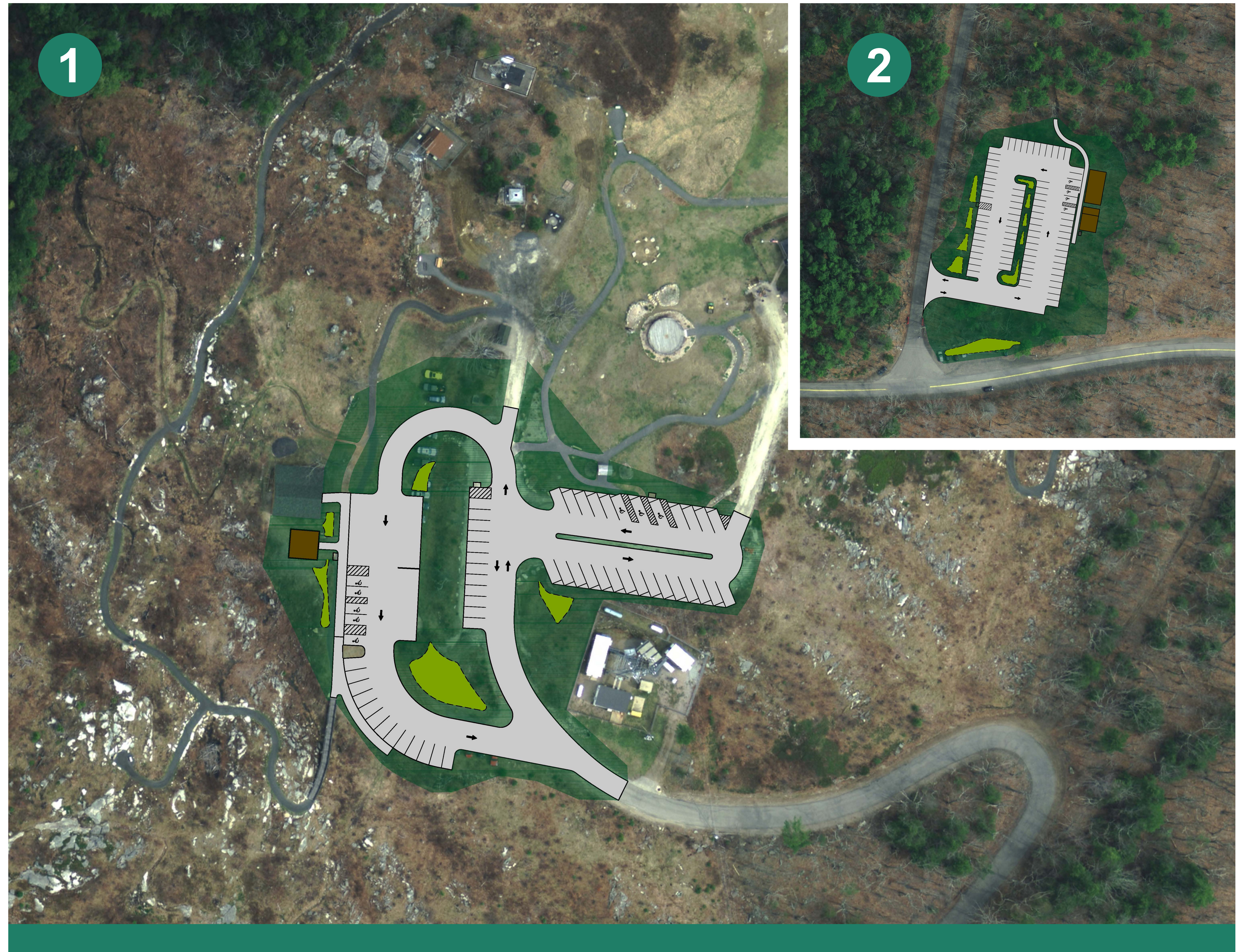
- **The Project is a Collaboration between York Water District and the Town of York.** Most of the project area is on York Water District Property and is in a "Public Water Supply Source Water Protection Area." As part of this effort, both parties have negotiated a long-term lease amendment.
- **Increased Safety:** The upgraded parking lots have been designed to improve public safety, provide defined parking spaces and access to site amenities.
- **Stormwater BMPs:** The project will integrate stormwater treatment best management practices (BMPs) to improve stormwater quality from the parking areas and protect Chase's Pond Watershed.
- **Parking Lot Pavement/Striping:** Paved parking will be effective to keep the area stable and allow easier year-round maintenance and efficient parking by enabling space striping.
- **Upgraded Restroom Facilities:** Project will include the construction of composting toilet facilities eliminating the need for port-a-potty facilities.

## 1. Summit Parking Highlights

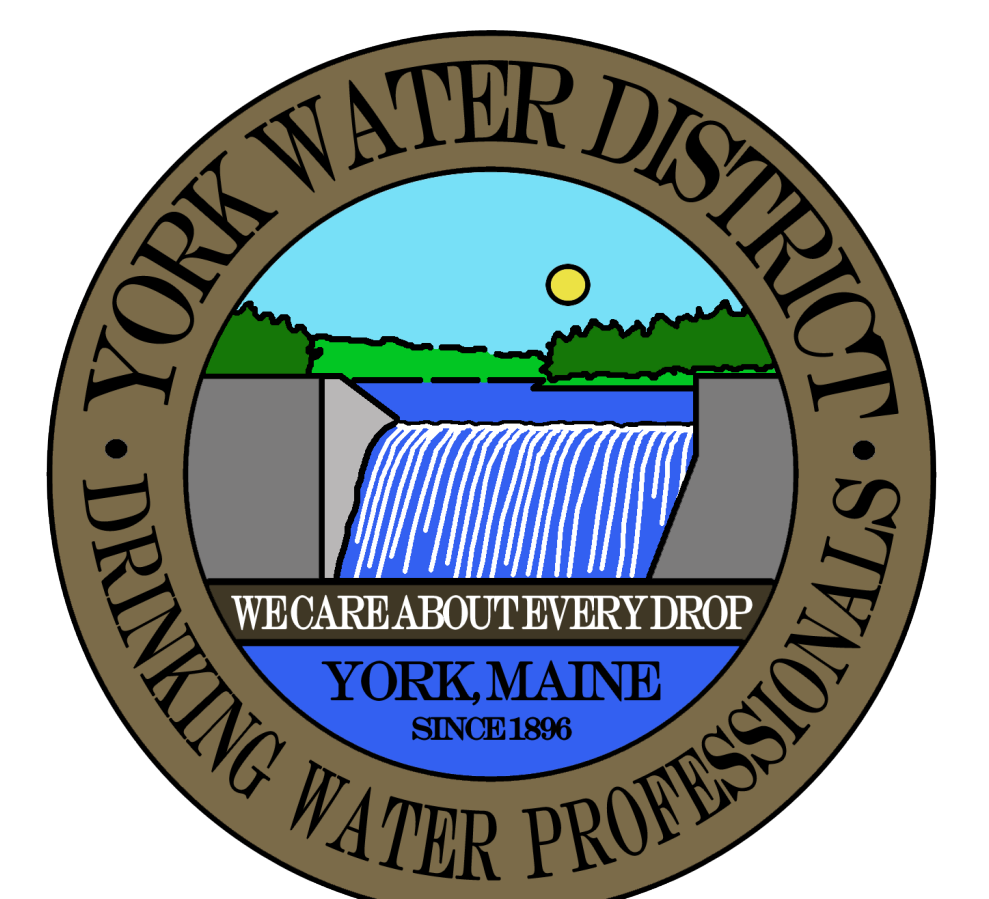
- **Dedicated parking spaces:** Consistent with current available parking (approximate 58 spaces), but better defined parking areas.
- **Upgraded Access for Vehicles and Buses:** Project creates a one-way loop between the main parking and overflow parking.
- **Upgraded Parking Main Lot:** The main lot has been expanded to incorporate angled parking and distinct travel flow to eliminate traffic congestion.
- **Adequate bus spaces:** Three spaces have been designed to accommodate buses which frequent the facility. Spaces have been designed with added depth so they can also be used for standard vehicle parking (additional 18 spaces) if bus groups are not scheduled and/or during peak times.
- **ADA Access to Big A Trail:** ADA spaces are located both near the restroom facility with direct access to Big A trail and main parking area.

## 2. Base Parking Highlights

- **Off-Road Parking:** The parking lot will include approximately 82 parking spaces and provide for safe vehicle and bus maneuvering providing access to existing trails.
- **Eliminate Mountain Road Parking:** The project will eliminate parking along Mountain Road and improve visitor safety. Upon completion of this project, Mountain Road will be formally posted no parking.
- **ADA Access:** The parking lot included three ADA spaces in close proximity to the proposed restroom and future visitor center building.
- **Future Visitor Center:** Being the destination it is, this project included space for a future Visitor Center building.



TOWN OF YORK  
PARKS & RECREATION



# Mount Agamenticus Parking and Restroom Improvements

## Project Highlights

- **The Project is a Collaboration between York Water District and the Town of York.** Most of the project area is on York Water District Property and is in a "Public Water Supply Source Water Protection Area." As part of this effort, both parties have negotiated a long-term lease amendment.
- **Increased Safety:** The upgraded parking lots have been designed to improve public safety, provide defined parking spaces and access to site amenities.
- **Stormwater BMPs:** The project will integrate stormwater treatment best management practices (BMPs) to improve stormwater quality from the parking areas and protect Chase's Pond Watershed.
- **Parking Lot Pavement/Striping:** Paved parking will be effective to keep the area stable and allow easier year-round maintenance and efficient parking by enabling space striping.
- **Upgraded Restroom Facilities:** Project will include the construction of composting toilet facilities eliminating the need for port-a-potty facilities.

## 1. Base Parking Highlights

- **Off-Road Parking:** The parking lot will include approximately 82 parking spaces and provide for safe vehicle and bus maneuvering providing access to existing trails.
- **Eliminate Mountain Road Parking:** The project will eliminate parking along Mountain Road and improve visitor safety. Upon completion of this project, Mountain Road will be formally posted no parking.
- **ADA Access:** The parking lot included three ADA spaces in close proximity to the proposed restroom and future visitor center building.
- **Future Visitor Center:** Being the destination it is, this project included space for a future Visitor Center building.

## 2. Summit Parking Highlights

- **Dedicated parking spaces:** Consistent with current available parking (approximate 58 spaces), but better defined parking areas.
- **Upgraded Access for Vehicles and Buses:** Project creates a one-way loop between the main parking and overflow parking.
- **Upgraded Parking Main Lot:** The main lot has been expanded to incorporate angled parking and distinct travel flow to eliminate traffic congestion.
- **Adequate bus spaces:** Three spaces have been designed to accommodate buses which frequent the facility. Spaces have been designed with added depth so they can also be used for standard vehicle parking (additional 18 spaces) if bus groups are not scheduled and/or during peak times.
- **ADA Access to Big A Trail:** ADA spaces are located both near the restroom facility with direct access to Big A trail and main parking area.



TOWN OF YORK  
PARKS & RECREATION

